

TYPE D2a

3 chambres / Bedrooms
2 salles de bain / Bathrooms

Superficie / Area 2073 pi² sq.ft. (193 m²)
Balcons / Balconies 550 pi² sq.ft. (51 m²)
TOTAL 2623 pi² sq.ft. (244 m²)

SYMPHONIA
SOL

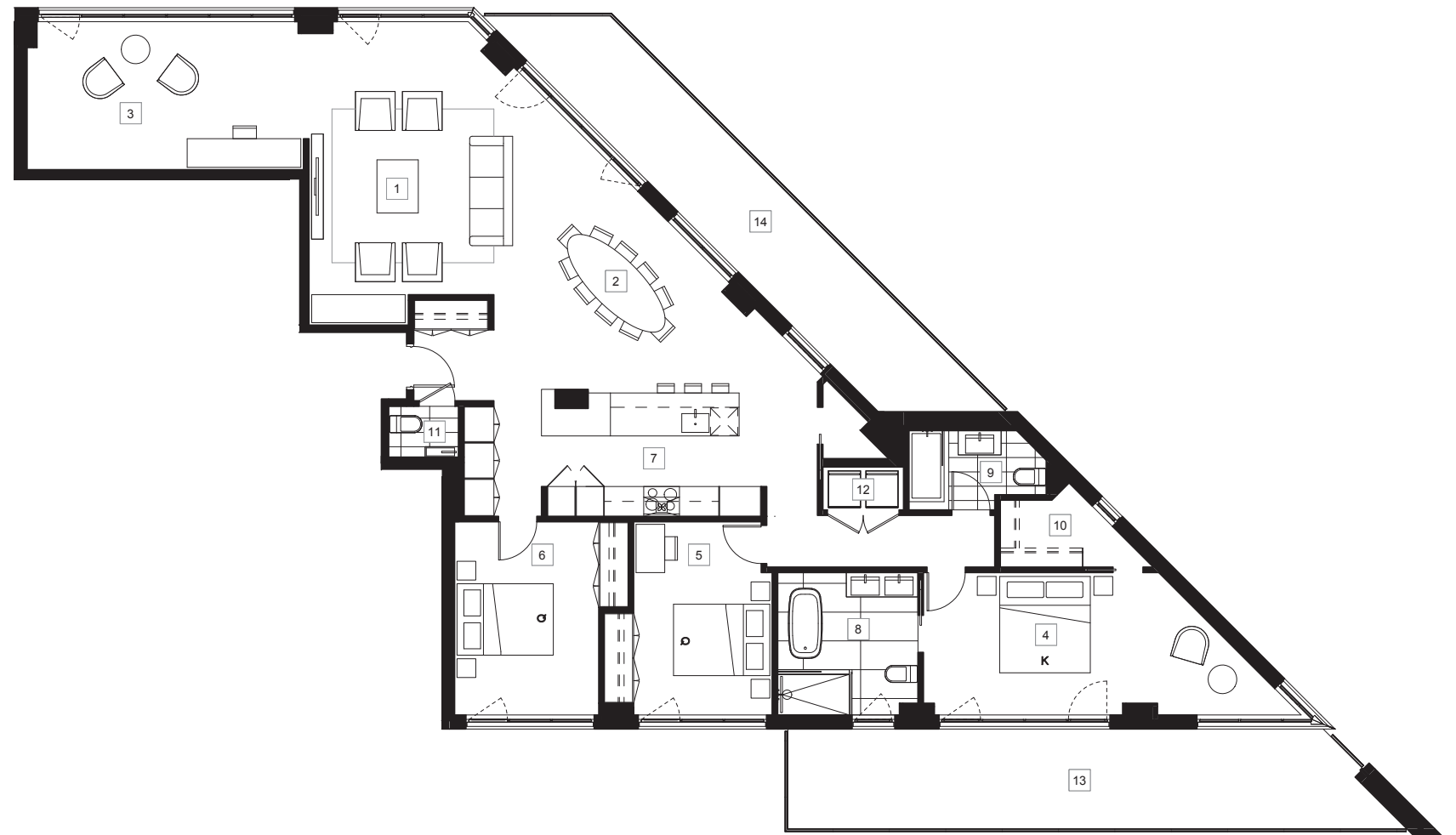
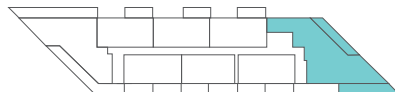
- | | | | |
|----|---|----|--|
| 01 | Séjour
Living room
14' - 3" x 21' - 2" | 08 | Salle de bain 1
Bathroom 1
9' - 10" x 9' - 11" |
| 02 | Salle à manger
Dining room
12' - 9" x 20' - 5" | 09 | Salle de bain 2
Bathroom 2
9' - 7" x 5' - 6" |
| 03 | Bureau
Den
19' - 8" x 10' - 4" | 10 | Penderie
Walk-in
8' - 4" x 4' - 8" |
| 04 | Chambre principale
Master bedroom
21' - 5" x 9' - 11" | 11 | Salle d'eau
Powder room
4' - 11" x 3' - 7" |
| 05 | Chambre 2
Bedroom 2
9' - 8" x 13' - 6" | 12 | Buanderie
Laundry
5' - 7" x 3' - 0" |
| 06 | Chambre 3
Bedroom 3
10' - 1" x 13' - 6" | 13 | Balcon 1
Balcony 1
7' - 2" x 41' - 1" |
| 07 | Cuisine
Kitchen
14' - 11" x 8' - 7" | 14 | Balcon 2
Balcony 2
6' - 6" x 39' - 1" |

UNITÉ UNIT

1106

ÉTAGE FLOOR

11



Les superficies et les dimensions sont approximatives et sujettes à des modifications sans préavis. La superficie brute de l'unité est calculée en incluant la moitié des murs mitoyens, le mur extérieur et le mur du corridor. Sizes and measurements are approximate and subject to change without notice. The gross area of a unit takes into account half the demising walls, the outside wall and the wall to the hallway.