

TYPE C4f

2 chambres / Bedrooms
2 salles de bain / Bathrooms

Superficie / Area 951 pi² sq.ft. (88 m²)
Balcon / Balcony 55 pi² sq.ft. (5 m²)
TOTAL 1006 pi² sq.ft. (93 m²)

SYMPHONIA
SQI

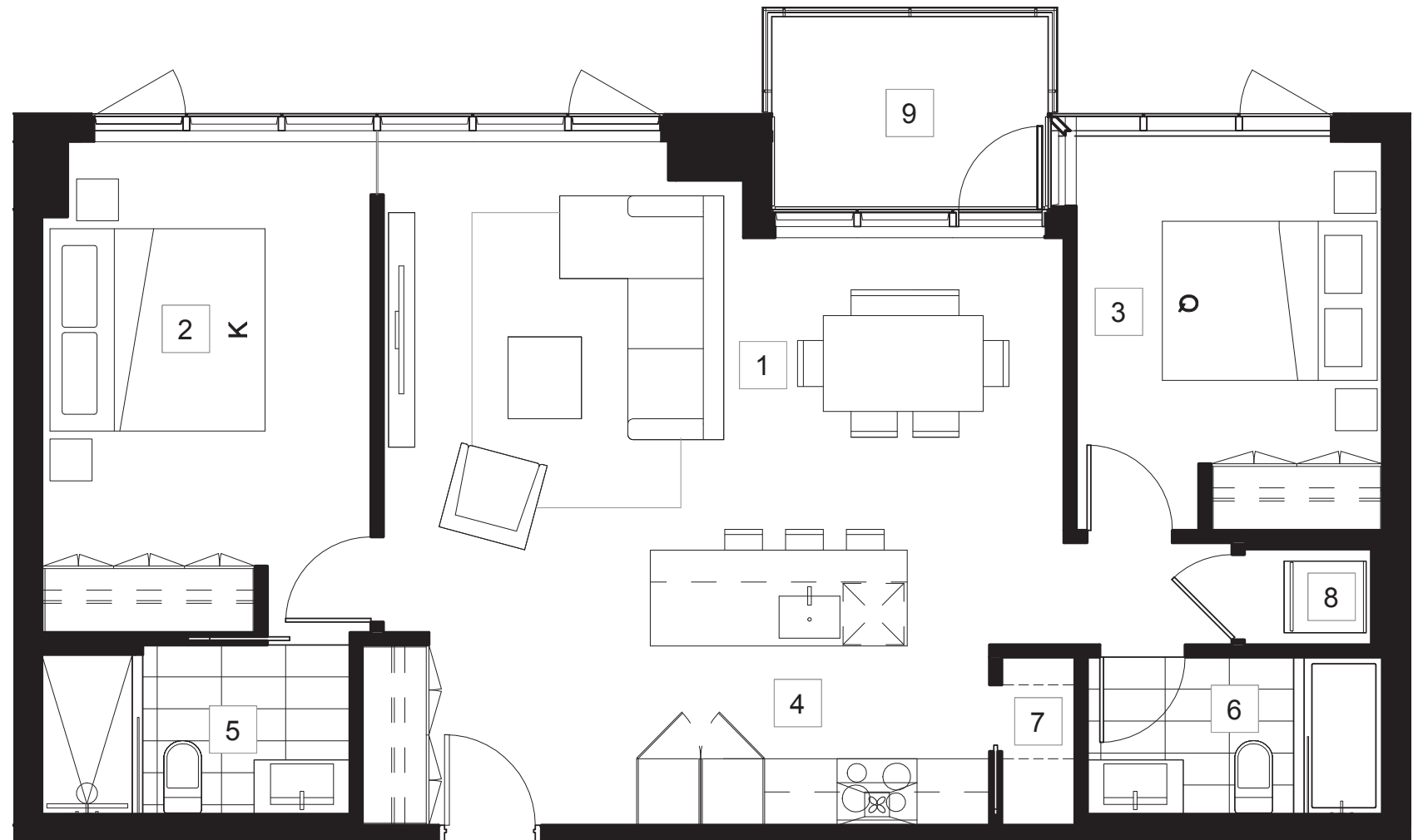
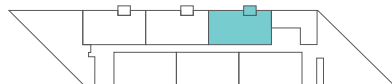
- 01 Séjour, salle à manger
Living room, dining room
21' - 4" x 11' - 7"
- 02 Chambre principale
Master bedroom
10' - 4" x 13' - 3"
- 03 Chambre 2
Bedroom 2
9' - 7" x 10' - 1"
- 04 Cuisine
Kitchen
11' - 0" x 8' - 7"
- 05 Salle de bain 1
Bathroom 1
9' - 8" x 5' - 4"
- 06 Salle de bain 2
Bathroom 2
9' - 3" x 4' - 11"
- 07 Garde-manger
Pantry
2' - 3" x 5' - 3"
- 08 Buanderie
Laundry
4' - 0" x 3' - 0"
- 09 Balcon
Balcony
8' - 8" x 6' - 0"

UNITÉ UNIT

204

ÉTAGE FLOOR

2



Les superficies et les dimensions sont approximatives et sujettes à des modifications sans préavis. La superficie brute de l'unité est calculée en incluant la moitié des murs mitoyens, le mur extérieur et le mur du corridor. Sizes and measurements are approximate and subject to change without notice. The gross area of a unit takes into account half the demising walls, the outside wall and the wall to the hallway.